

Analysis of the Reliability of the Audit Proposed by the CNE (Nov. 20, 2006)

I

The National Electoral Council (CNE) proposed an audit of the electoral results printed by the “electoral voting machine” which consists in the opening of at least one ballot box in each and every one of the automated Voting Centers, according to the following table:

N° of tables in the Center	1	2	3	4	5	6	7	8	9	10	>10
N° of tables to be audited	1	1	2	2	2	3	3	3	4	4	5

On a national level, this distribution includes somewhat more than 54% of the voting table’s ballot boxes.

The opposition accepted this proposal on the basis that since 1978 the CNE has located the electors in (the) Voting Centers according to the last (terminal) numbers of the Identity Cards, certain of the quantitative (electors per table) and qualitative (electoral preference) uniform distribution.¹

II

A study regarding the distribution of electors of the tables and Voting Centers for the December 3, 2006 election (see Section III) detected, against all statistical expectations, an important distortion in the distribution of the terminal numbers of the Identity Cards in 1,687 Voting Centers.

Delving deeper into the analysis, it was found that this distortion was not random but a forced “migration” of voters from Centers where the “Officialist” party had consistently won: a “gerrymandering”² which affected 4,229,185 electors from those Centers.

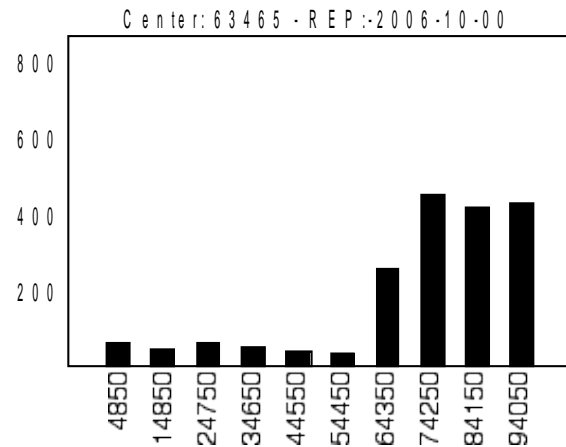
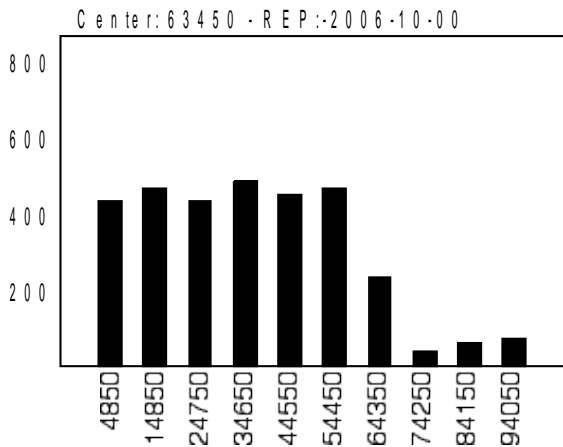
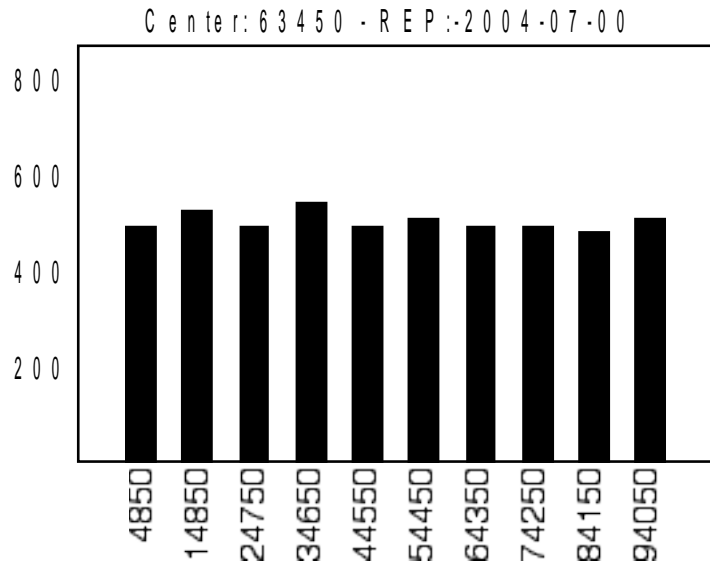
What is unjustifiable about those forced “migrations” is that historically, the only two reasons to “relocate” or “move” a voter were the following: a) personal initiative, where the voter registers in another Center (“relocation”); and b) CNE’s initiative in the case that (and only in that case) that the Center would have been eliminated for any reason (a “move”).

After the 2004 Referendum, the CNE *motu proprio*, moved 2,149,873 voters to “Satellite Centers” located within the same Parrish, according to the following pattern: a) from “Officialist” Centers; and b) in a distorted manner, restricting itself to certain Identity Card terminal numbers. The following example demonstrates the case of Voting Center 63450, a traditionally “Officialist” majority center:

¹ For example: if a Voting Center has 5,000 electors and 10 voting tables, voters with terminal numbers 00 to 09 are located in table 1, with terminal numbers 10 to 19 in table 2, and so forth, until table 10 with terminal numbers 90 to 99. With such a distribution, each table will have around 500 voters (quantitative distribution) that should behave with political uniformity (qualitative distribution).

² WIKIPEDIA: To divide (a geographic area) into voting districts so as to give unfair advantage to one party in elections. A controvertible method, especially in places where the majority electoral system is used.

Distorted migration from Center 63450 to Satellite Center 63465
 Number of voters by the last two numbers of the Identity Card (charts not to scale)



In this sample one observes that the new Center (63465), which operates 10 tables, has 4 tables that are clearly “Officialist” (coincidentally, the same number of tables that has to be audited).

The consequence of this procedure is that the resulting distribution of electors in both the Center from which the voters were “moved” as well as the Center becomes distorted with two types of tables: a) The “Officialist”, with voters who were moved; and b) those which were initially “empty”, and later filled with new voters relocated from remote Centers.

In spite of the fact that new voters are traditionally distributed uniformly by the terminal numbers of the IDs, the study also detected that the ranges of ID terminals of new voters in these tables are also distorted. This circumstance permitted the detection of this anomaly.

Due to this distorted composition, the “audit” proposed by the CNE will not reflect a true electoral conduct in the identified Centers. If the selection of the tables to be audited is done in a random manner, distortions will become evident. If only “Officialist” tables are deliberately selected for audit, aside from the fact that the distortion in results between the tables will be greater, the possibility of provoking an unreal qualitative uniformity of electoral preference becomes viable by adjusting the results of the rest of the tables (not audited) to match the audited results to obtain an undue electoral advantage.

III

The study was realized by Dr. Guillermo Salas and Dr. Gustavo Delfino, who previously investigated the results of the Presidential Recall Referendum of 2004³.

The investigation consisted in comparing the Aug. 2004 electoral scenario with that of Aug. 2006, taking into consideration: the REP (electorate registry) for 2004 and 2006, the Voting Centers from 2004 and 2006, the electoral results from 2004, the list of signatories from the CNE and the Tascón-Maisanta List. All these sources are official, with the exception of the Tascón-Maisanta List, whose existence is a “Known (Notorious) Fact” from the judicial process point of view.

The analysis detected a massive migration of voters to Satellite Centers, in a distorted manner with respect to the terminal numbers of the Identity Cards. Subsequently, it was verified that the original Centers were markedly “Officialist”, according to previous electoral results.

The task was carried out exhaustively on the total universe of Centers and Voting Tables and is verifiable with the official information provided by the CNE, attached by DVD.

From the analysis we arrive at the following conclusion and recommendation:

Conclusion: The stipulated audit of opening and counting 54% of the boxes does not guarantee, under these conditions, that the stipulated audit result will be indicative the real result of the elections.

Recommendation: Open 100% of the boxes, to offer full guarantees to all political actors and comply with that which is established in Article 169 of the Electoral Law (Ley del Sufragio y Participación Política).

ANEXES

1. Excel file with the Voting Centers for the 2006 elections, highlighting in RED those which were object of forced migrations.
2. DVD containing the study’s raw data for study validation purposes: files corresponding to the elections of 2004 and 2006 (provided by Dr. Guillermo Salas).

³ See www.gentederedes.org